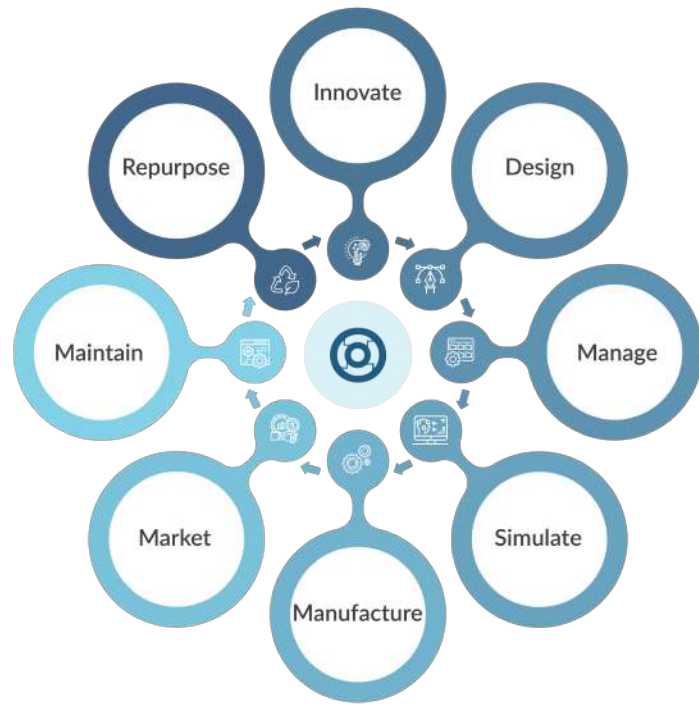


# KloudPLM for Manufacturing Industries

KloudPLM is the best cloud-based PLM platform to help engineering and manufacturing teams stay on the same page. It is a single source of truth for all the stakeholders at all stages of the product development process.

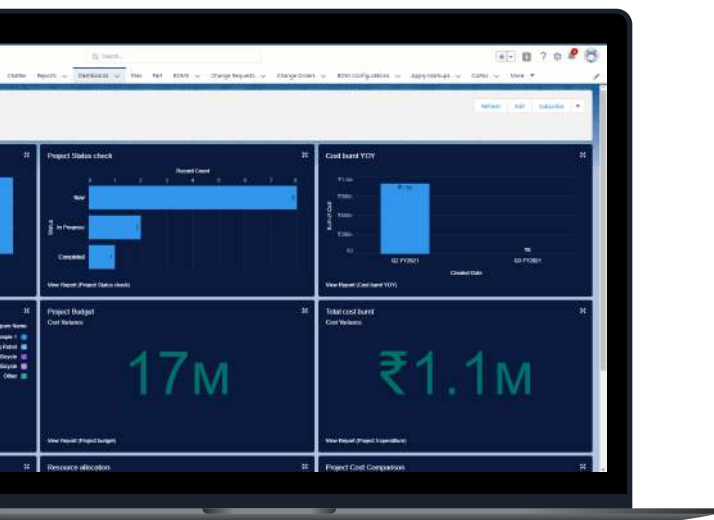
## Advantages of PLM in Manufacturing

- **Adhere to Quality Standards** - Create products that are in line with the required standards, improve their quality, and reduce compliance hassles.
- **Increase Customer Loyalty** - Facilitate customer feedback throughout the product lifecycle to develop more innovative and customer-friendly products.
- **Increase Time to Market Rate** - Design, review, and approve designs anytime, anywhere. Detect issues, derive solutions, and deliver products to market faster with KloudPLM.
- **Accelerate New Product Introductions** - reduce development cycles, decrease rework time and costs and deploy products faster into the market.
- **Maximize Profitability and Margins** - Manage Inventory, suppliers, and purchase orders to optimize project budget and meet production demands.



## KloudPLM Features:

- **Real-Time Design Management** - Design and Manufacture products in real with improved collaborative access.
- **Bill of Materials** - Easily create bill of materials for each product you build.
- **Project Management** - Create manage and execute projects across your value chain.
- **Requirements Management** - Document, analyze, and prioritize requirements needed for project completion.
- **Engineering Change Order (ECO)** - Simplify closed-loop change processes to optimize and accelerate change order processes.



Flexible



Integrated



Fast to Deploy



Easy to use